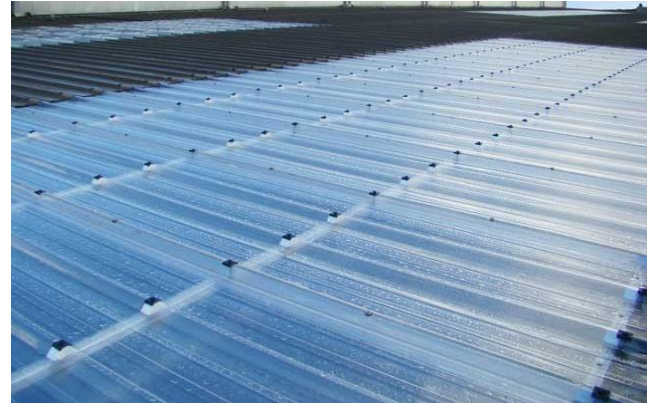


Material Application

ONDUCLAIR® PVC sheeting is manufactured from UV-resistant corrugated PVC, designed to deliver long-lasting performance with minimal maintenance, making it a practical choice for both professional contractors and DIY users.

All ONDUCLAIR® PVC sheets are produced using high-quality PVC material.



Application

Typical uses include:

- **Rooflights and Skylights:** Enhances natural daylight in workshops, garages, greenhouses, and agricultural buildings while maintaining weatherproof protection.
- **Canopy and Carport Roofing:** Provides durable, lightweight shelter with excellent light diffusion, making it suitable for domestic carports, walkway covers, and patio roofing.
- **Gazebo and Outdoor Structures:** Offers a reliable roofing option for garden structures, pergolas, verandas, and other leisure spaces.
- **Vertical Partitions and Windbreaks:** Serves as an effective barrier for indoor and outdoor applications, including livestock enclosures, storage bays, and temporary dividers in warehouses or yards.

Features & Benefits

- UV-resistant for long-term durability
- Compatible with standard DIY tools for ease of handling
- Lightweight and cost-effective solution
- Simple and quick installation

Technical characteristics

Product Specifications	ONDUCLAIR® PVC 3"	ONDUCLAIR® PVC 6"	ONDUCLAIR® PVC Iron Profile	ONDUCLAIR® PVC Onduline 95/38
Width (mm)	762	1086	660	950
Length	6', 7', 8', 9', 10', 12'	5', 6', 7', 8', 9', 10', 12'	6' 8' 10'	2000 mm
Thickness (mm)	0.8, 1.1, 1.3	1.3	1.1	1.2
Crown to Crown	72.6	147	76.2	-
Height (mm)	20	47.6	18	38
Weight (kg)	-	-	-	3.82
Material	PVC, stabilised with Tin			
Light Transmission	DIN 5036: 76% (1mm)			
U-Value	5.7 W/m2K (1mm)			
Service Temperature	-20oC to +60oC			
Temperature Considerations	To prevent heat buildup, avoid stacking ONDUCLAIR® PVC sheets or storing them in direct sunlight or high-temperature environments. Due to the material's thermal expansion and contraction properties, adequate allowances must be made during installation. Fixings should be checked and adjusted periodically to accommodate movement. Avoid designs where ONDUCLAIR® PVC sheets are placed directly against dark-colored roofing materials, sealants, or fillers, as these can increase localized heat absorption and affect sheet performance.			
Chemical Considerations	ONDUCLAIR® PVC exhibits resistance to a wide range of common chemicals. However, contact with aggressive solvents—such as creosote or similar wood preservatives—should be avoided, as these may degrade the material and compromise performance.			
Fire Performance	EN 13501: B, s2-d0,			

onduline.co.uk

150 Minories
Aldgate | London
EC3N 1LS